

Agenda

Children and Families Overview and Scrutiny Panel

Wednesday, 21 June 2017, 10.00 am
County Hall, Worcester

All County Councillors are invited to attend and participate

This document can be provided in alternative formats such as Large Print, an audio recording or Braille; it can also be emailed as a Microsoft Word attachment. Please contact Democratic Services on telephone number 01905 844963 or by emailing democraticservices@worcestershire.gov.uk

If you can not understand the contents of this document and do not have access to anyone who can translate it for you, please contact 01905 765765 for help.

বাংলা। আপনি যদি এই দলিলের বিষয়বস্তু বুঝতে না পারেন এবং আপনার জন্য অনুবাদ করার মত পরিচিত কেউ না থাকলে, অনুগ্রহ করে সাহায্যের জন্য 01905 765765 নম্বরে যোগাযোগ করুন। (Bengali)

廣東話。如果您對本文檔內容有任何不解之處並且沒有人能夠對此問題做出解釋，請撥打 01905 765765 尋求幫助。 (Cantonese)

普通话。如果您对本文件内容有任何不解之处并且没有人能够对此问题做出解释，请拨打 01905 765765 寻求帮助。 (Mandarin)

Polski. eżeli nie rozumieją Państwo treści tego dokumentu i nie znają nikogo, kto mógłby go dla Państwa przetłumaczyć, proszę zadzwonić pod numer 01905 765765 w celu uzyskania pomocy. (Polish)

Português. Se não conseguir compreender o conteúdo deste documento e não conhecer ninguém que lho possa traduzir, contacte o 01905 765765 para obter assistência. (Portuguese)

Español. Si no comprende el contenido de este documento ni conoce a nadie que pueda traducírselo, puede solicitar ayuda llamando al teléfono 01905 765765. (Spanish)

Türkçe. Bu dokümanın içeriğini anlayamazsanız veya dokümanı sizin için tercüme edebilecek birisine ulaşamıyorsanız, lütfen yardım için 01905 765765 numaralı telefonu arayınız. (Turkish)

اردو۔ اگر آپ اس دستاویز کی مضمولات کو سمجھنے سے قاصر ہیں اور کسی ایسے شخص تک آپ کی رسائی نہیں ہے جو آپ کے لئے اس کا ترجمہ کر سکے تو، براہ کرم مدد کے لئے 01905 765765 پر رابطہ کریں۔ (Urdu)

كوردی سۆزانی. ننگۆر نۆتوانی تێبێگهی له ناوچۆرێكی نۆم بێگهی و دصست به هێچ كۆس ناگات كه و هیهێگۆرێتۆه بۆت، تكلیه تملفۆن بۆ 01905 765765 و داوای رێنۆینی بۆكۆ. (Kurdish)

ਪੰਜਾਬੀ। ਜੇ ਤੁਸੀਂ ਇਸ ਦਸਤਾਵੇਜ਼ ਦੇ ਮਸ਼ਹੂਰ ਸਮਝ ਨਹੀਂ ਸਕਦੇ ਅਤੇ ਕਿਸੇ ਅਜਿਹੇ ਵਿਅਕਤੀ ਤੱਕ ਪਹੁੰਚ ਨਹੀਂ ਹੋ, ਜੋ ਇਸਦਾ ਤੁਹਾਡੇ ਲਈ ਅਨੁਵਾਦ ਕਰ ਸਕੇ, ਤਾਂ ਕਿਰਪਾ ਕਰਕੇ ਮਦਦ ਲਈ 01905 765765 'ਤੇ ਫ਼ੋਨ ਕਰੋ। (Punjabi)

DISCLOSING INTERESTS

There are now 2 types of interests:
'Disclosable pecuniary interests' and **'other disclosable interests'**

WHAT IS A 'DISCLOSABLE PECUNIARY INTEREST' (DPI)?

- Any **employment**, office, trade or vocation carried on for profit or gain
- **Sponsorship** by a 3rd party of your member or election expenses
- Any **contract** for goods, services or works between the Council and you, a firm where you are a partner/director, or company in which you hold shares
- Interests in **land** in Worcestershire (including licence to occupy for a month or longer)
- **Shares** etc (with either a total nominal value above £25,000 or 1% of the total issued share capital) in companies with a place of business or land in Worcestershire.

NB Your DPIs include the interests of your spouse/partner as well as you

WHAT MUST I DO WITH A DPI?

- **Register** it within 28 days and
- **Declare** it where you have a DPI in a matter at a particular meeting
 - you must **not participate** and you **must withdraw**.

NB It is a criminal offence to participate in matters in which you have a DPI

WHAT ABOUT 'OTHER DISCLOSABLE INTERESTS'?

- No need to register them but
- You must **declare** them at a particular meeting where:
You/your family/person or body with whom you are associated have a **pecuniary interest** in or **close connection** with the matter under discussion.

WHAT ABOUT MEMBERSHIP OF ANOTHER AUTHORITY OR PUBLIC BODY?

You will not normally even need to declare this as an interest. The only exception is where the conflict of interest is so significant it is seen as likely to prejudice your judgement of the public interest.

DO I HAVE TO WITHDRAW IF I HAVE A DISCLOSABLE INTEREST WHICH ISN'T A DPI?

Not normally. You must withdraw only if it:

- affects your **pecuniary interests OR** relates to a **planning or regulatory** matter
- **AND** it is seen as likely to **prejudice your judgement** of the public interest.

DON'T FORGET

- If you have a disclosable interest at a meeting you must **disclose both its existence and nature** – 'as noted/recorded' is insufficient
- **Declarations must relate to specific business** on the agenda
 - General scattergun declarations are not needed and achieve little
- Breaches of most of the **DPI provisions** are now **criminal offences** which may be referred to the police which can on conviction by a court lead to fines up to £5,000 and disqualification up to 5 years
- Formal **dispensation** in respect of interests can be sought in appropriate cases.

Children and Families Overview and Scrutiny Panel

Wednesday, 21 June 2017, 10.00 am, County Hall, Worcester

Membership

Councillors:

Mrs F M Oborski (Chairman), Mrs J A Potter (Vice Chairman), Ms P Agar, Mr R W Banks, Ms R L Dent, Ms P A Hill, Mr S M Mackay, Ms T L Onslow and Ms S A Webb

Co-opted Church Representatives (for education matters)

Bryan Allbut (Church of England)

Parent Governor Representatives (for education matters)

Ms C Richardson (Parent Governor) and Vacancy

Agenda

Item No	Subject	Page No
1	Apologies and Welcome	
2	Declaration of Interest and of any Party Whip	
3	Public Participation Members of the public wishing to take part should notify the Head of Legal and Democratic Services in writing or by e-mail indicating the nature and content of their proposed participation no later than 9.00am on the working day before the meeting (in this case 20 June 2017). Enquiries can be made through the telephone number/e-mail address below.	
4	Confirmation of the Minutes of the Previous Meeting (previously circulated)	
5	Support for Children with Disabilities During Transition to Adulthood	1 - 16
6	Draft Children and Young People's Plan 2017-21	17 - 18

Agenda produced and published by the Head of Legal and Democratic Services, County Hall, Spetchley Road, Worcester WR5 2NP. To obtain further information or hard copies of this agenda, please contact Alyson Grice 01905 844962/Samantha Morris 01905 844963 email: scrutiny@worcestershire.gov.uk

All the above reports and supporting information can be accessed via the Council's website [here](#)

This page is intentionally left blank

CHILDREN AND FAMILIES OVERVIEW AND SCRUTINY PANEL 21 JUNE 2017

SUPPORT FOR CHILDREN WITH DISABILITIES DURING TRANSITION TO ADULTHOOD

Summary

1. The Council's Lead Officers and Cabinet Members with Responsibility for Children and Families, and Adult Social Care, have been invited to the meeting to provide an overview of the service and support provided to children with disabilities during their transition to adulthood.
2. This discussion will be held jointly with the Council's Adult Care and Wellbeing Overview and Scrutiny Panel members, since the support services provided are relevant to both children and adults. All members of the Adult Care and Wellbeing Overview and Scrutiny Panel have been invited to the meeting.

Transitional Support for Children with Disabilities

3. The Young Adults Team was established in 2012 to support transition to maximise outcomes for vulnerable young people and minimise the stress of change for service users and their families.
4. The Young Adults Team is a social work team with integrated housing and carer support workers. The Team is structured within Adult Services Directorate and works closely with other adult services, however also has formalised arrangements to ensure effective working with Children's Services.
5. The social workers have caseloads that require the application of both children's and adults social work legislation and requirements. The Team has both children's and adult safeguarding lead. The Young Adults Team Structure is attached at Appendix 1.
6. The Team supports young people aged 16 to 25 with a learning disability, physical disability or complex health and social care needs. The very large majority of these young people transfer from the services of the Children with Disabilities social work team.
7. A very small minority of young people will in the care of the Local Authority. There are currently 10 young people supported by the Young Adults Team who are Looked After. Care Leavers provision is also provided through the Young Adults Team. In addition a very few young people are subject to Child Protection plans.

8. The social work team act as the lead professional across all the levels of need, liaising and working with both children's and adult social work safeguarding services in line Worcestershire's Local Safeguarding Boards policies and procedures.

9. The Team works with up to 300 young people at any one time. Most (approximately 80%) of these young people have learning disabilities and attend special schools or colleges. A small minority (approximately 20%) have a physical disability alone and attend mainstream schools and colleges. Almost all of the young people supported by the Young Adult Team have an Education, Health and Care Plans (EHCP).

10. Of those with learning disabilities, nearly half of them will have autism related behaviour and a very small minority (approximately 10) have behaviour that requires additional resourcing and skilled intervention.

11. The Young Adults Team is currently working with 16 young people who attend out-of-county residential school or college placements. The focus of this work is to achieve outcomes that are sustainable for the young person on their return to Worcestershire.

12. Social workers take case responsibility when the young person turns 16 years or at an appropriate transition point before this date. The point of transition to adult social care services from the Young Adults team is flexible and dependent on a stable and effective plan being in place for education/employment, care and health.

13. Outcomes for young people supported by the Young Adults Team are monitored taking into account outcomes relating to care arrangements, housing, education and employment, health and housing.

14. At the end of 2016/17 on reaching adulthood the very large majority of service users (168/196) were in education, employment, work experience or placements. The proportion of this cohort not in education, employment or training (NEET) was 14% (28). This remains a higher figure in comparison with 12.5% in the West Midlands and 11.5% nationally of all young people that are NEET. However this is a reduction on the two previous years and so an improving experience for young people.

15. Of this same cohort at the end of 2016/17 the very large majority of service users 90% (177/196) are living in settled accommodation. This has been an improving picture over the last two years and is higher than the national target rate, set at 77.5%.

16. During the previous term of Council in 2013/2014, care for children with disabilities during their transition to adulthood was discussed by both Scrutiny Panels and the Panel members were briefed about the new cross-directorate team arrangements.

Since this time the experience for young adults with disabilities has been influenced by significant changes in legislation, namely Care Act 2014 and Children and Families Act 2014.

17. Both pieces of legislation place a significant focus on the best possible outcomes based on high expectations and linked to long term aspirations. This has led to the development of Preparing for Adulthood Outcomes as a way for young people, parent carers, education, health and care providers to focus on the young person, their needs and aspirations and independence. Links between the Children and Families Act 2014 and Care Act 2014. The Preparing for Adulthood (PfA) factsheet is attached at Appendix 2.

18. The Adult Care and Wellbeing Overview and Scrutiny Panel also looked at support for adults with learning disabilities, including the shift to new approaches for day services to reflect their wishes to be more independent, be part of their communities and for some, to access employment opportunities. Arising from these discussions, scrutiny panel members wanted to understand the support for children as they become adults.

19. Panel members will also be aware that the Council's Children's Services were graded 'inadequate' by Ofsted following its inspection in November 2016 (Appendix 3). The Inspection findings have been well publicised, along with the Council's actions and plans to address necessary improvements. During the inspection positive feedback was given regarding the work of the Young Adults Team; however the report referred to the need for this Team, the Children with Disabilities Team and the Care Leavers Service to have stronger links. Actions have been implemented to improve these links.

Purpose of the Meeting

20. Following the discussion of services and support provided to care leavers during their transition to adulthood, members of the Children and Families Overview and Scrutiny Panel, and the Adult Care and Wellbeing Overview and Scrutiny Panel, are asked to:

- Consider the information provided
- Determine whether any further scrutiny or information is required at this time
- Agree any comments to be highlighted to the Cabinet Members with Responsibility for Children, Families and Communities, and for Adult Social Care

Supporting Information

Appendix 1 Young Adults Team Structure

Appendix 2 Links between the Children and Families Act 2014 and Care Act 2014. Preparing for Adulthood (PfA) factsheet

Appendix 3 Ofsted inspection of services for children in need of help and protection, children looked after and care leavers (January 2017) - [available here](#)

Contact Points

Worcestershire County Council: 01905 763763

Worcestershire Hub: 01905 765765

Specific Contact Points for this report

Alyson Grice/Samantha Morris, Overview and Scrutiny Officers,
Commercial and Change Directorate (01905 844962/844963)

Email: scrutiny@worcestershire.gov.uk

Background Papers

In the opinion of the proper officer (in this case the Directors of Adult Services and of Children, Families and Communities) the following are the background papers relating to the subject matter of this report:

Agenda and Minutes of:

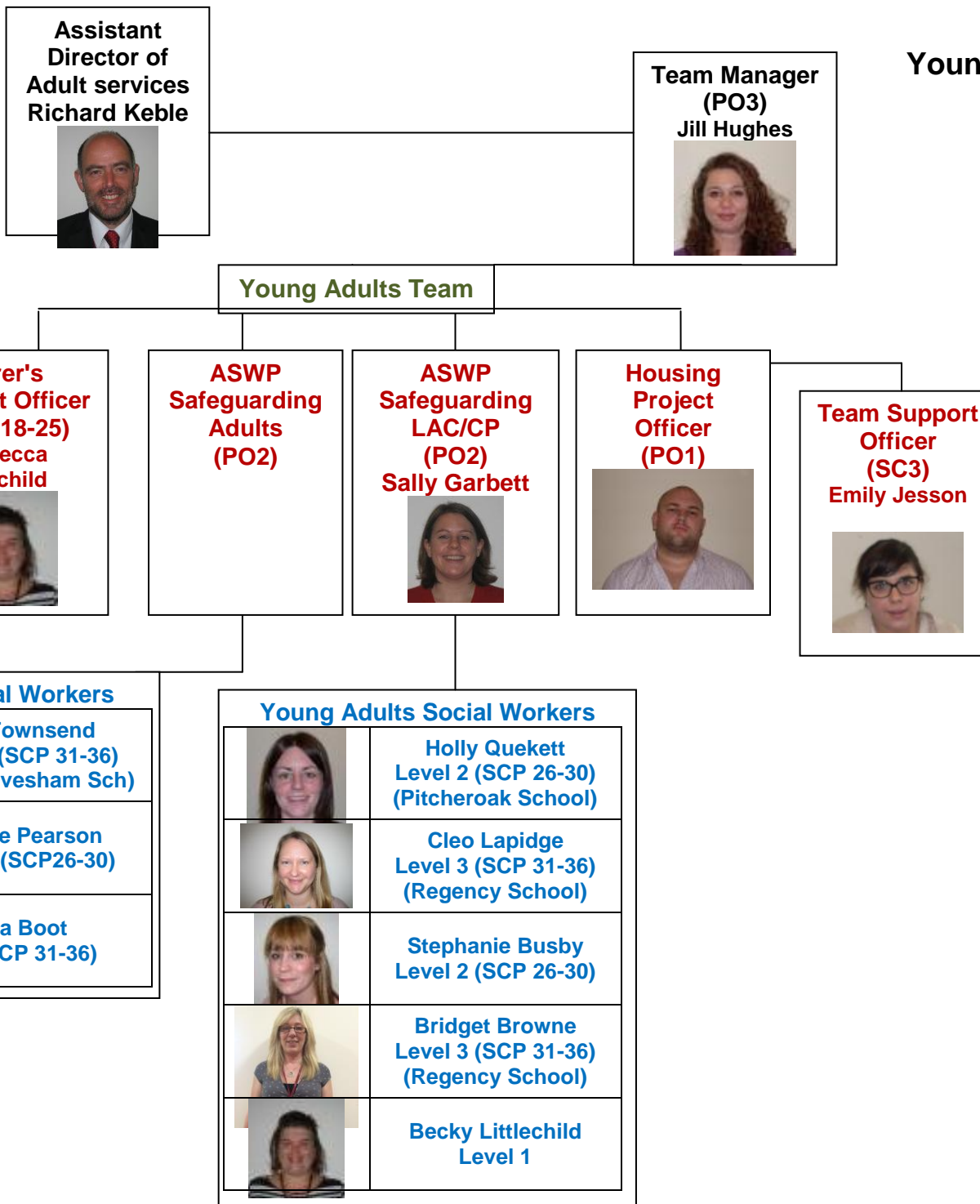
Children and Young People Overview and Scrutiny Panel on 8 May 2014

Adult Care and Wellbeing Overview and Scrutiny Panel on 16 March 2017, 23 May 2016, 12 November 2013

All council agendas and minutes are available on the Council's website

<http://worcestershire.moderngov.co.uk/ieDocHome.aspx?Categories>

Young Adults Team Structure



This page is intentionally left blank



PfA Factsheet: The Links Between The Children and Families Act 2014 and The Care Act 2014



The Background

In the last couple of years there have been a number of policy changes that have affected the lives of disabled young people, those with SEN and their families, and had an impact on the range and quality of support available to them as they prepare for adulthood. The two pieces of legislation that will have the greatest influence on support for disabled young people preparing for adulthood are Part 3 of the Children and Families Act 2014, which focuses on Special Educational Needs and Disability and Part 1 of the Care Act 2014, which focuses on the care and support of adults.

Importantly, the Children and Families Act 2014 introduced a system of support which extends from birth to 25, while the Care Act 2014 deals with adult social care for anyone over the age of 18. This means there will be a group of young people aged 18-25 who will be entitled to support through both pieces of legislation. The two Acts have the same emphasis on outcomes, personalisation, and the integration of services. It is therefore essential that both of these Acts are joined up at a local level.

This factsheet identifies the key elements in both Acts that relate to preparing for adulthood. It will support local authorities to identify where processes overlap and to consider how they can be effectively joined up. It explores how the legislation can be used to create positive outcomes for disabled young people and those with SEN, with consideration to challenges and barriers, and suggests practical ways of implementing the reforms in both Acts through good practice examples.

What you need to know

The Children and Families Act 2014

Part 3 of the Children and Families Act 2014 transforms the system for disabled children and young people and those with SEN, so that services consistently support the best outcomes for them. The reforms create a system from birth to 25 through the development of coordinated assessment and Education, Health And Care Plans; improving cooperation between all services responsible for providing education, health or social care; and giving parents and young people greater choice and control over their support.

The SEND reforms focus on the following themes:

- Working towards clearly defined outcomes
- Engagement and participation of parents and young people
- Joint Commissioning and developing a Local Offer of support
- Coordinated assessments and Education, Health and Care Plans
- Personalisation and personal budgets.

Preparation for adulthood is a key element of the reforms that cuts across all of these themes.

The transformation of the system for disabled young people and those with SEN is intended to ensure that services consistently support the best outcomes for them by ensuring that that children, young people and their parents have greater choice and control in decisions and that their needs are properly met.

For more information about Part 3 of the Children and Families Act 2014 please see the key resources at the end of this factsheet.

The Care Act 2014

Part 1 of the Care Act 2014 pulls together threads from over a dozen different Acts into a single, modern framework for care and support. It reforms how the law works, prioritising individual wellbeing for adults with care and support needs over the age of 18, with a particular focus on person-centred practice and outcomes, putting people in control of their care and support.

The intended outcome of the new legislation is that people's wellbeing, needs and goals are prioritised so that individuals will no longer feel like they are battling against the system to get the care and support they need. It highlights the importance of preventing and reducing needs, putting people in control of their care and support and for the first time, it puts carers on a par with those for whom they care.

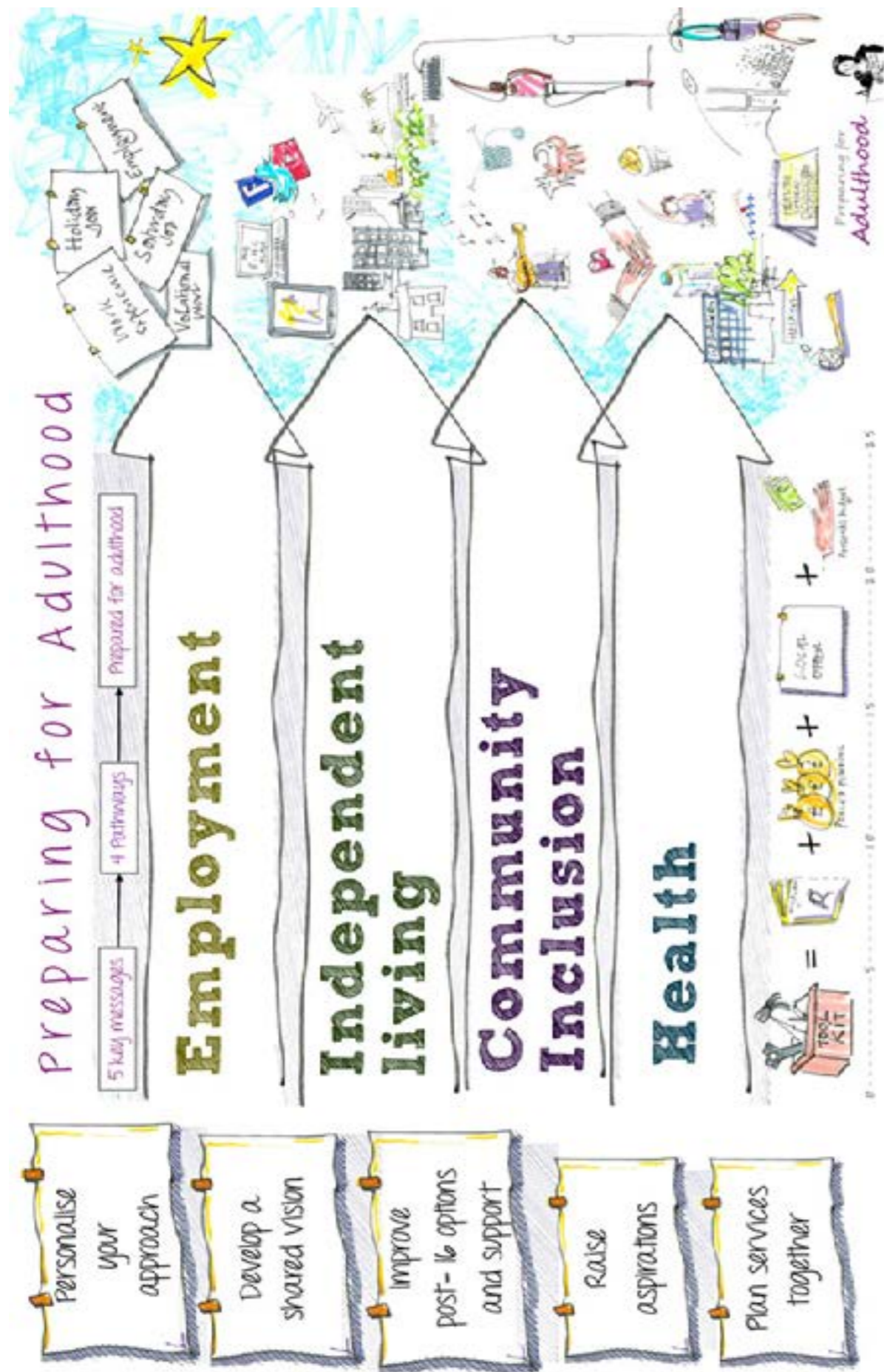
For more information about Part 1 of the Care Act 2014 please see the key resources at the end of this factsheet.

For disabled young people aged 18-25 there will be an impact from both pieces of legislation. This is a period of time which can be particularly challenging for young people and their families. It is therefore vital that when local authorities and partners are implementing the reforms in both the Children and Families Act 2014 and the Care Act 2014, they consider the two together with an emphasis on joining up processes where there are links between them.

What are the opportunities?

There are many places where the duties in the Acts overlap. This creates a range of opportunities for local authorities to consider making effective use of resources when planning for implementation of the reforms. This could include new systems and processes, such as pooled budgets across adults' and children's services as well as across education, health and social care and the development of 0-25 teams which sit across both services.

The emphasis in both Acts is on outcome focused, person-centred practice when considering assessment, planning and support as well as co-production and multi-agency approaches to planning and commissioning.



This graphic shows how our 5 key messages, identified by the SEND pathfinders, are essential in improving life chances in the four outcomes: employment, independent living, community inclusion and health, which are vital in ensuring disabled young people are prepared for adulthood. Available from: www.preparingforadulthood.org.uk/outcomes.

Outcomes and Wellbeing

What the law says:

Children and Families Act 2014

- Outcome focus
- Preparing for Adulthood outcomes from Year 9:
 - Employment
 - Health
 - Independent living
 - Friends, relationships and community participation.
- Focus on choice and control over support for young people and their families.
- Focus on the importance of the involvement of parents and young people in decision making.
- Must have regard to the wellbeing duty in the Care Act when providing support to parent carers.
- Duty to ensure integration of services across education, health and care, in particular where it promotes the wellbeing or improves the special educational provision that is available.

Care Act 2014

- Outcome focus
- Duty to promote wellbeing, including:
 - a) Control by the individual over day-to-day life (including over care and support, or support, provided to the individual and the way in which it is provided);
 - b) Participation in work, education, training or recreation;
 - c) Social and economic wellbeing;
 - d) Domestic, family and personal relationships;
 - e) Suitability of living accommodation;
 - f) The individual's contribution to society.
- Care and support works to actively promote people's wellbeing and independence, rather than waiting for people to reach a crisis point.
- Duty to provide or arrange for the provision of services, facilities or resources that contribute towards preventing or delaying the development of care and support needs.
- When promoting individual wellbeing the local authority must have regard to the importance of achieving a balance between the individual's wellbeing and that of any friends or relatives who are involved in caring for the individual.

The Children and Families Act 2014 focuses on putting children and young people at the heart of planning and decision making through co-production and person-centred practice. It emphasises the importance of engaging young people and their families in all processes from developing and planning, particularly in relation to the Local Offer and Education, Health and Care Plans, and also in the commissioning of services and strategic decision making.

In alignment with this the Care Act 2014 focuses on individual wellbeing with an emphasis on outcomes and person-centred practice. For the first time participation in work has been identified as an outcome for adults with care and support needs. This development should ensure that the focus on young people having employment as they move into adulthood is maintained by adult social care. Social care professionals are expected to work in partnership with colleagues in health and education to find creative ways of ensuring that individuals are able to express their views and are supported to engage in decision making, including arranging independent advocacy if required.

Developing person-centred, measurable outcomes across different areas of the lives of young people is a challenge that is common to both Acts.

Outcomes and Wellbeing – Things to do:

- Develop a shared vision for Preparing for Adulthood with young people, families and key stakeholders who work with young people aged 14-25.
- Raise awareness of what helps disabled people achieve employment, independent living, community inclusion, and good health, to young people, families and across all agencies.
- Develop capacity and competency in outcome focused support planning across children’s and adults’ services. Staff and professionals who are developing EHC plans, including Child’s Needs Assessments (see Assessment and Planning section) and care and support plans will need to develop common skills in person-centred practice, developing and monitoring outcomes, integrated support plans and personal budgets. Training staff together can lead to efficiencies and a more seamless experience of transition to adulthood for disabled young people.
- Develop a lifespan approach to outcomes. Ensure that professionals at each stage understand their role and responsibilities and how they relate to other stages of a young persons preparation for adulthood.

What the law says:

Children and Families Act 2014	Care Act 2014
<ul style="list-style-type: none"> • Single, co-ordinated assessment process. • Single Education, Health and Care plan for young people with SEN, which can potentially continue up to the age 25. • Emphasis on person-centred practice. • Children and young people are engaged, empowered and supported to participate in planning for their future. • Focus on preparation for adulthood from Year 9 at the latest. • Duty to assess a parent carer or a young carer if it appears they may have needs for support, or if they request an assessment, where the local authority are satisfied that they may provide or arrange for the provision of services under section 17 of the Children Act 1989. • Parent carers’ needs assessment must have regard to: <ul style="list-style-type: none"> ○ The wellbeing of the parent carer; ○ the need to safeguard and promote the welfare of the disabled child cared for, and any other child for whom the parent carer has parental responsibility. • Young carers’ needs assessment must have regard to: <ul style="list-style-type: none"> ○ the extent to which the young carer is participating in or wishes to participate in education, training or recreation, and the extent to which the young carer works or wishes to work. 	<ul style="list-style-type: none"> • Duty to carry out an Assessment for young people over 18. • Duty to produce a Care and Support plan for anyone over 18 where eligible needs are identified. • Duty to carry out a Child’s Needs Assessment (CNA) if there is likely to be care and support needs post-18. • Duty to carry out a CNA at a time when it is of significant benefit to the young person’s preparation for adulthood. • CNA can be requested by young people or parents at any age. • Adult Need’s Assessments carried out for individuals over the age of 18 must include a personal budget. • Duty to carry out Child’s Carer’s Needs Assessment and Young Carer’s Needs Assessment where there is “likely need” for support post-18 and when it is of “significant benefit”. • A Carer’s Assessment must include an assessment of: <ul style="list-style-type: none"> ○ Whether the carer is able, and is likely to continue to be able, to provide care and whether the carer is willing to do so; ○ The outcomes that the carer wishes to achieve in day-to-day life; ○ Whether, and if so to what extent, the provision of support could contribute to the achievement of those outcomes.

The Children and Families Act 2014 introduces Education, Health and Care (EHC) plans and a single assessment and planning process, for young people with SEN, which can potentially continue up to age 25.

The Care Act 2014 introduces a new duty on local authorities to carry out Child's Needs Assessments (CNA) for young people who are likely to have needs for care and support after they reach 18. The purpose of a CNA is to determine what adult social care a young person might be eligible for once they reach 18 so they can make informed choices about their future.

Young people or their parents can request a CNA at any time prior to a young person's 18th birthday whether or not they have an EHC plan. In addition, a local authority has a duty to carry out an assessment for anyone where there is "likely to be a need for care and support post-18" whether or not they are eligible needs. The CNA should be carried out at a time when it is of "significant benefit" to a young person's preparation for adulthood and should include an indicative personal budget so that young people are able to plan what their future support might look like.

The local authority can decide not to carry out an assessment where there is not "likely to be a need for care and support post-18" or because the timing is not of "significant benefit" to the young person's preparation for adulthood. In these circumstances they must provide reasons for this in writing, and include information and advice on what can be done to prevent or delay the development of needs for care and support. If they do not carry out an assessment because the timing is not of "significant benefit" the local authority should advise when it is likely to be of significant benefit and contact the young person and their family to arrange the assessment at that time.

For a young person with an EHC plan a CNA should, as a starting point, be based on a review of the care element of the EHC plan. However it is vital that it fits with and informs the holistic approach across the plan. This would create the least duplication for professionals, young people and families and provide person-centred information about a young person's needs, plans and aspirations for their future. It should include clear, short and medium term outcomes which can then be used as the basis for a conversation with the young person, their family, a professional from adults' services who has a good knowledge of the support options that may be available to them in the future, as well as the other professionals involved in their care and support.

Under the Children and Families Act 2014, EHC plans must clearly set out the care and support which is reasonably required by the young person's SEN. For people over 18 with a care and support plan, this should be incorporated into the EHC plan rather than developed separately. It will include those elements of their care and support which are directly related to their SEN and also specify other care and support. Elements that are directly related to SEN should be delineated. For young people who do not have an EHC plan, but where they are supported by children's social care, their existing assessment and plan should form the basis of the CNA.

The key to ensuring that a CNA leads to effective planning is to make sure that the process results in an addition to the care element of the

EHC plan, which should include an indicative personal budget, and allows for the needs of young people to feed into the Joint Commissioning Strategy in the appropriate way. The conversation about whether a young person needs a CNA should begin in the Year 9 review as part of the preparation for adulthood planning. The process itself could form part of the review of the EHC plan in order to minimise the repetition of assessments and meetings that many young people and families tell us are stressful for them.

Matthew's Story

Matthew is a young adult who currently lives independently, with appropriate support, and has a job that he loves. From the age of 11 Matthew has been involved in a range of work experience, such as being given responsibility for delivering the post in his school. This experience has helped him to develop his confidence, social and communication skills, and has given him the opportunity to learn about different types of employment opportunities that he might want to do in the future.

As Matthew got older his school started working to develop person-centred approaches to planning. Matthew's mother immediately recognised the value in this approach and pushed for person-centred practice to be used to support planning in other areas of Matthew's life.

To ensure that Matthew was fully involved in this process, 4 planning sessions were held with his Transition Officer and facilitated by an outside agency who had expertise in person-centred planning. Matthew's aspirations were to live independently in his own home and to have paid employment in an office. It was vital to Matthew's preparation for adulthood that he was given information about what support he would be eligible for post-18 in order to plan for sustainable employment and to ensure the appropriate support would be available to enable Matthew to live independently. This involved considering whether he would still have a personal budget, would it be sufficient to employ a team of skilled people to support him with travel training, job coaching and to live independently and also developing appropriate housing options locally.

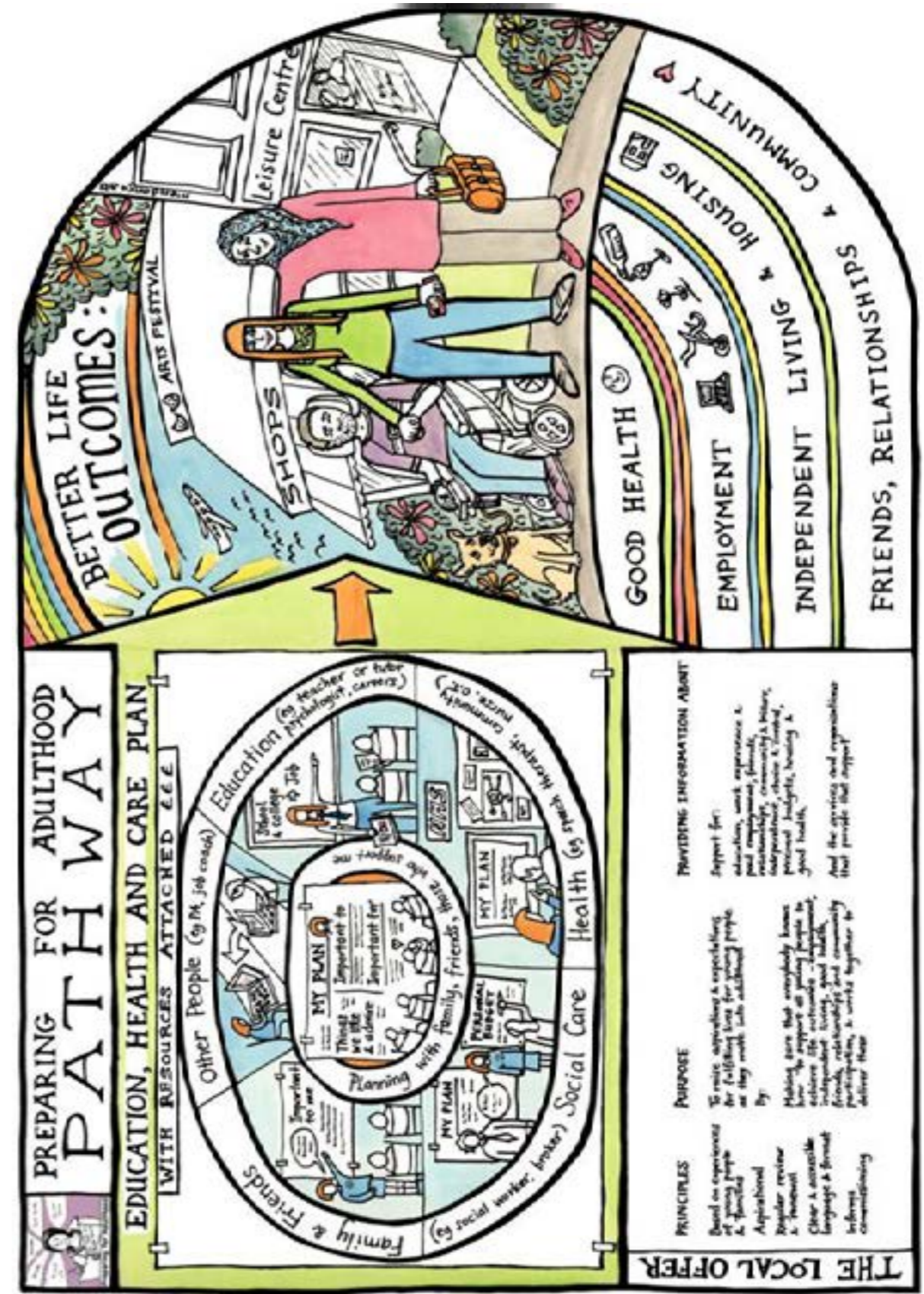
Matthew and his family worked with the local authority and the housing association to identify a suitable home for Matthew. The housing association then bought the house for him and another young man to live in along with a carer. This whole process took over 3 years and early, person-centred planning has been crucial to Matthew achieving his goals.

You can see what Matthew is doing now in this video:
www.media19.co.uk/production/matthews-story



Assessment and planning – Things to do:

- Ensure that there is a representative from adult social care on the local authority's SEND implementation board. Ideally this person would have responsibility for implementing the Care Act 2014 locally.
- Ensure that the process for Adults' Needs Assessment and Care and Support plan for young people post-18 are aligned to the assessment and planning process for the care element of an EHC plan.
- Work in partnership with families, young people and other professionals to ensure planning enhances and supports wider aspirations.
- Establish which professional, with good knowledge of adult care and support services, is responsible for CNAs, ensuring they work with those designing the coordinated assessment and EHC planning process.
- From Year 9 ensure young people and families receive information on how to request a CNA. This can be done as part of their Year 9 review. If the young person is likely to be eligible for care and support post-18 it is important that Adult social care are part of transition reviews from Year 9. The local authority should work with schools to identify the best way to achieve this and to inform the preparing for adulthood planning process.
- Develop a process that enables the CNA to produce an indicative



The Preparing for Adulthood pathway builds on the Getting a Life Pathways, reflects the SEND reforms and shows how the Local Offer and EHC plan can help young people achieve fulfilling lives and good outcomes. Available from: www.preparingforadulthood.org.uk/pathway.

Joint Commissioning and Personal Budgets

What the law says:

Children and Families Act 2014

- Integrate education, health and care services to promote wellbeing;
- Put in place joint commissioning arrangements including securing provision set out in EHC plans;
- Requirement to cooperate to meet EHC needs;
- Young people and families have a right to request a personal budget if they have an EHC plan;
- Right to request a direct payment.

Care Act 2014

- Ensure the integration of care and support with health provision and health-related provision where this would:
 - promote the wellbeing of adults with care and support needs and carers;
 - contribute to the prevention or delay of the development of needs for care and support;
 - improve the quality of care and support for adults.
- Duty to promote the efficient and effective operation of a market in services for meeting care and support needs, with a view to ensuring that any person in its area wishing to access services in the market:
 - has a variety of providers to choose from who, collectively, provide a variety of services;
 - has a variety of high quality services to choose from;
 - has sufficient information to make an informed decision about how to meet the needs in question.
- Requirement to cooperate with each of its relevant partners, and each relevant partner must cooperate with the authority, in relation to adults with care and support needs in its area;
- Care and Support plan for individuals over the age of 18 must include a personal budget;
- Right to request a direct

The overlap between the two Acts around joint commissioning creates an opportunity to explore how pooled budgets across local authorities and health bodies, as well as across children's and adults' services, can lead to more effective use of resources and better outcomes for young people. Partners need to be aware that rules on NHS Continuing Healthcare funding (NHS CHC)¹ come into force at age 18. Some young people with EHC plans will need to be assessed for eligibility, particularly where a young person is already in receipt of children's Continuing Care funding². This does not mean that their support must change, except to match their needs. People eligible for NHS CHC have the right to request a personal health budget (and from October 2014 the right to have one in most circumstances)³.

The Children and Families Act 2014 places a duty on local authorities and health bodies to jointly commission services across education, health and care. The Care Act 2014 includes general duties on local authorities to promote integration and on local authorities and "relevant partners" (including the NHS) to cooperate generally and in relation to individuals. Joint commissioning that encompasses the transition to adult services will need to involve a wider range of partners, such as housing and employment support.

The Care Act 2014 also provides the legislative framework for the Better Care Fund, which includes existing NHS, and social care funding, that will now be jointly invested.

https://www.gov.uk/government/uploads/system/uploads/attachment_data/file/270417/Factsheet_19_Better_Care_Fund.pdf

The Better Care Fund has a focus on ensuring that health and care and support work together to improve continuity of care, to deliver earlier intervention to support people to stay healthy and independent at home and to deliver person-centred care and support.

Both the Children and Families Act 2014 and the Care Act 2014 promote better choice and control over care and support for young people and families. The Children and Families Act 2014 provides young people and families the right to request a personal budget as part of an EHC plan. The personal budget could be made up of SEN, social care and/or health funding depending on eligibility. The Care Act 2014 requires local authorities to include a personal budget in the Care and Support Plan (Care element of an EHC plan) for individuals over the age of 18.

Personal budgets and personal health budgets can be taken in a variety of ways to suit the individual and their family (including direct payments), and budget holders should be offered a range of support to make these choices real.

¹ <https://www.gov.uk/government/publications/national-framework-for-nhs-continuing-healthcare-and-nhs-funded-nursing-care>

² Thresholds for children's Continuing Care funding and NHS Continuing Healthcare funding vary: https://www.gov.uk/government/uploads/system/uploads/attachment_data/file/499611/children_s_continuing_care_Fe_16.pdf

³ <http://www.personalhealthbudgets.england.nhs.uk/>

Joint commissioning and personal budgets - Things to do:

- The joint commissioning strategy, the Health and Wellbeing strategy and Joint Strategic Needs Assessment (JSNA) should be informed by young people, their families, information in a young person's EHC plan and the Local Offer. Young people and families can play a valuable role in quality checking, the results of which should feed back into the strategy.
- Develop a process to allow the information from the EHC plan, including the CNA, and from personal budget holders' choices, to inform the Joint Commissioning Strategy.
- Ensure that the work streams around developing joint commissioning across the 0-25 age group and the Better Care Fund are joined up and that there is a common process being developed.
- Develop the market to ensure that there are quality services, which lead to the intended outcomes of the Children and Families Act 2014 and the Care Act 2014, that young people can buy with their personal budget. Local authorities should work with education and training providers, health, social care, employment and housing agencies to develop a range of post-16 support options that lead to better outcomes and more efficient use of resources.
- Explore how personal budgets across education, health and social care (and personal health budgets for young people eligible for NHS Continuing Healthcare post-18 or those in receipt of children's Continuing Care funding) can be integrated to develop personalised post-16 options and support that lead to better outcomes for young people.
- Ensure that young people and their families have access to good information, advice and support in relation to what is available and how to purchase it.



Eleanor's story

When Eleanor and her family started to plan for her post-16 education they continued to have high aspirations. They wanted to put together a week that was like that of any other 16 year old. The local authority agreed to create a personal budget made up of funding from education and social care. This funding provided Eleanor with the support she needed to take part in a Level 3 Health and Social Care course at her local sixth form college, a ceramics painting class, an adult education cooking class, music lessons, Girl Guides, swimming and laughter yoga.

Eleanor had a range of work placements, including visiting

an elderly woman in her community who loves to sing. Eleanor's love of singing made it a particularly successful experience.

During the last year Eleanor and her mum, with one of Eleanor's assistants, have established a small cosmetics business, which means Eleanor holds parties and has stalls at various fairs and events. This development was based on Eleanor's interest in cosmetics and her love of being with people.

Eleanor's mum feels that having a support broker from the local authority to help put Eleanor's individual package and funding together was an enormous help. She suggests that people use the Getting a Life Pathways to support young people to prepare for adulthood. You can see the Pathways at: www.gettingalife.org.uk

Information, Advice and Support (IAS)

What the law says:

Children and Families Act 2014

- Duty to develop a Local Offer of services and support available across education, health and care from 0-25 for disabled children and young people and those with SEN and their parent carers.
- The Local Offer must be co-produced with disabled children and young people and those with SEN and their parent carers.
- Duty to provide Information, Advice and Support (IAS) directly to children, young people and parents on matters relating to SEN and disability.
- IAS available through a single point of access which can signpost to other services and types of information.
- All information from both the Local Offer and the IAS service must be accessible.
- Duty on local authorities to review their local offer, publish comments that they receive on their local offer and publish their response to those comments.

Care Act 2014

- Duty to establish and maintain a service to provide information and advice relating to care and support to individuals and relating to support for carers.
- The service must provide information about:
 - How the system operates in its area.
 - The choice of types of care and support and choice of providers.
 - How to access the care and support.
 - How to access independent financial advice on matters relevant to meeting the needs for care and support.
 - How to raise concerns about the safety and wellbeing of an adult.
 - Provide sufficient information and advice to enable adults to plan for meeting care and support needs that may arise.
 - Information must be accessible.

Accessible, good quality information, advice and support are vital to ensuring good outcomes for young people and their families. Existing Information, Advice and Support Services (www.iassnetwork.org.uk/) provide impartial information, advice and support to parents and carers of children and young people with SEN. The Children and Families Act 2014 extends the duty on local authorities to provide information, advice and support on education, health and social care, both to the parents and carers of disabled children and young people and those with SEN and also directly to the children and young people themselves. Local authorities should ensure that they work with the Information, Advice and Support Services Network (IASS), formerly the National Parent Partnership Network, in order to build up and develop this single point of access.

The Care Act 2014 requires local authorities to establish and maintain a service which must provide information and advice relating to care and support for adults and support for carers. For young people aged 18-25 and their carers this service will overlap with IASS services. In order to maintain the single point of access required in the Children and Families Act 2014, consideration should be given to how they can be aligned and whether there is scope for a service that is joint funded between children's and adults' services.

The Children and Families Act 2014 also requires every local area to have a Local Offer, which includes the education, health and care services the local authority expects to be available to support disabled young people and young people with SEN aged from 0-25. There is a duty for local authorities to consult with young people, parents, schools, colleges and other services when developing the Local Offer.

Information, Advice and Support – Things to do:

- Develop the Local Offer in partnership with young people, parents, carers and professionals.
- Use the Local Offer to identify gaps in provision and feed into the joint commissioning strategy.
- Use the Local Offer to review the quality and quantity of IAS services for disabled young people and those with SEN and their families (e.g The Information, Advice and Support Services) and for disabled young people 18+ and their families (e.g Disabled people User Lead Organisations (DPULO) and other local authority IAS services).
- Ensure there is a strategic approach to developing good IAS for young people moving into adulthood.
- Explore how IAS can be developed to meet the new duties in the Children and Families Act 2014 as a single point of access signposting to other services.
- Ensure that professionals responsible for developing the Information and Advice service in the Care Act 2014 are working closely with those developing the Local Offer and IAS.
- Consider establishing a joint information and advice offer across all age groups, or across the 0-25 age group.

Key Resources

Care Act 2014

You can view the Care Act statutory guidance here: https://www.gov.uk/government/uploads/system/uploads/attachment_data/file/366104/43380_23902777_Care_Act_Book.pdf

Suite of Care Act resources from SCIE: <http://www.scie.org.uk/care-act-2014/>

Children and Families Act 2014

Code of practice: <https://www.gov.uk/government/publications/send-code-of-practice-0-to-25>

Preparing for Adulthood Resources

Developing the Preparation for Adulthood Section of the Local Offer: <http://www.preparingforadulthood.org.uk/resources/wider-resources/developing-the-preparation-for-adulthood-section-of-the-local-offer>

Delivering Support and Aspiration for disabled young people:

www.preparingforadulthood.org.uk/resources/pfa-resources/delivering-support-and-aspiration

PfA Forum and FAQ documents:

Local offer: http://www.preparingforadulthood.org.uk/media/327752/week_1_updated_march.pdf

Engagement of young people and families: http://www.preparingforadulthood.org.uk/media/328284/week_2_final.pdf

EHC plans and personal budgets: http://www.preparingforadulthood.org.uk/media/332478/week_3_4.pdf

Personalisation and Person Centred Practice: www.preparingforadulthood.org.uk/media/334094/week_5_final.pdf

PfA Blog: <http://preparingforadulthood.wordpress.com/>

PfA e-bulletin: www.preparingforadulthood.org.uk/what-we-do/best-practice-and-information

Wider Resources

SEND Information Packs: www.sendpathfinder.co.uk/infopacks/

The Local Government Association: <http://www.local.gov.uk/care-support-reform>

Personal Budgets and Supported Employment: www.bild.org.uk/our-services/events/working-together/

Transition Information Network: www.transitioninfonetwork.org.uk

Council for Disabled Children - Strategic Reform Partner: <http://www.councilfordisabledchildren.org.uk/what-we-do/strategic-reform-partner-work>

About this publication

This factsheet was produced by the Preparing for Adulthood programme. The Preparing for Adulthood programme is funded by the Department for Education as part of the delivery support for the SEN and disability reforms. The Preparing for Adulthood programme is delivered by a partnership between The National Development Team for inclusion and The Council for Disabled Children.

This factsheet was first published in April 2014. It was revised in February 2016.

Extracts from this factsheet may be reproduced for non-commercial research, education or training purposes on the condition that the source is acknowledged. For any other use please contact us.

If you have any questions about the Preparing for Adulthood programme please contact us:

Phone: 01225 789135

Email: info@preparingforadulthood.org.uk

Web: www.preparingforadulthood.org.uk

Twitter: www.twitter.com/PfA_tweets

CHILDREN AND FAMILIES OVERVIEW AND SCRUTINY PANEL

21 JUNE 2017

DRAFT CHILDREN AND YOUNG PEOPLE'S PLAN 2017-21

Summary

1. The Assistant Director for Families, Communities and Partnerships and the Operations Manager (Connecting Families) have been invited to the meeting to discuss the draft Children's and Young People's Plan 2017-21 (CYPP).

Background

2. Worcestershire is developing a new Children's and Young People's Plan for 2017-21. The Plan is a joint, strategic overarching plan for all agencies that work with children and young people.
3. The new Plan will be owned by all agencies working with children, young people and families. The Plan:-
 - Sets expectations around the way we work in Worcestershire
 - Clarifies the collective ambition and aspirations for all children and young people in Worcestershire
 - Identifies key priorities and success measures
 - Builds on and add value to existing plans
 - Will change over time to respond to need

Overview and Scrutiny Performance Board

4. In accordance with the Council's constitution, the Overview and Scrutiny Performance Board will receive, comment and advise on the draft CYPP as part of the Council's policy framework. However, in previous years, consideration of the draft CYPP has been undertaken by the Children and Families Overview and Scrutiny Panel (or its predecessor body). At its meeting on 19 June OSPB will be asked to formally delegate consideration of the draft CYPP to the Children and Families O&S Panel. The Chairman will update the Panel on the OSPB's discussions at the meeting.

Next Steps

5. Any comments from the Panel will be forwarded to the Cabinet Member with Responsibility for Children and Families and the Health and Well-Being Board. The Plan will then be signed off by the Health and Well-Being Board and Cabinet in July and endorsed by Council in September.

Purpose of the Meeting

6. The Children and Families Overview and Scrutiny Panel is asked to:
 - Consider and comment on the draft Children and Young People's Plan 2017-21;
 - Determine whether it would wish to carry out any further scrutiny, and
 - Agree whether it would wish to make any comments to the Cabinet Member with Responsibility for Children and Families and the Health and Well-Being Board.

Supporting Information

Appendix 1 – Draft Children and Young People's Plan 2017-21 (to follow)

Contact Points

Worcestershire County Council: 01905 763763

Worcestershire Hub: 01905 765765

Specific Contact Points for this report

Alyson Grice/Samantha Morris, Overview and Scrutiny Officers,
Commercial and Change Directorate (01905 844962/844963)

Email: scrutiny@worcestershire.gov.uk

Background Papers

In the opinion of the proper officer (in this case the Director of Children, Families and Communities) the following are the background papers relating to the subject matter of this report:

- Agenda and Minutes of Overview and Scrutiny Performance Board held on 19 June 2017

[All agendas and minutes are available on the Council's website here.](#)